

Genetic structure among spawning aggregations of the gulf coney *Hyporthodus acanthistius*

Ricardo Beldade^{1,2,3,4,*}, Alexis M. Jackson¹, Richard Cudney-Bueno^{5,6},
Peter T. Raimondi¹, Giacomo Bernardi¹

¹Department of Ecology and Evolutionary Biology, University of California Santa Cruz, 100 Shaffer Road, Santa Cruz, California 95060, USA

²USR 3278 CRIOBE, CNRS EPHE, CBETM de l'Université de Perpignan, 66860 Perpignan Cedex, France

³Laboratoire d'excellence 'Corail', USR 3278 CRIOBE CNRS-EPHE, 66860 Perpignan Cedex, France

⁴Universidade de Lisboa, Faculdade de Ciências, Centro de Oceanografia, Campo Grande, 1749-016 Lisboa, Portugal

⁵School of Natural Resources and the Environment, University of Arizona, Biological Sciences East, Room 325, Tucson, Arizona 85721, USA

⁶Institute of Marine Sciences, University of California Santa Cruz, 100 Shaffer Road, Santa Cruz, California 95060, USA

ABSTRACT: Many large groupers form spawning aggregations, returning to the same spawning sites in consecutive spawning seasons. Connectivity between spawning aggregations is thus assured by larval dispersal. This study looks into the genetic structure and gene flow among spawning aggregations of a large grouper, the gulf coney *Hyporthodus acanthistius*, in the northern Gulf of California. First, using the mitochondrial control region and 11 microsatellites, we calculated F_{ST} metrics and conducted a Bayesian clustering analysis to determine structure among 5 spawning aggregations. Shallow genetic structure was found, separating the southernmost spawning aggregate from the remainder. Second, we used the results from the structure analysis and local water circulation patterns to delineate 3 distinct models of gene flow. The best-supported model, in which the southernmost spawning aggregate formed one group and all other spawning aggregates were nested into a second group, was the one that was consistent with water circulation during the species' spawning season. Larval retention within a seasonal anti-cyclonic gyre that formed during the gulf coney's spawning season may be responsible for the patterns found. This study highlights the importance of local oceanographic conditions in dictating the structure among spawning aggregations even at small geographic scales and contributes to informed management plans for this overexploited grouper.

KEY WORDS: Grouper · Dispersal · Connectivity · Sea of Cortez · Oceanography · Eddies · Retention · Migration models · Rooster hind · *Epinephelus*

Resale or republication not permitted without written consent of the publisher

INTRODUCTION

Knowledge of how genetic variation is partitioned in the ocean is fundamental for understanding the ecology, conservation and management of marine resources (Mora & Sale 2002, Gell & Roberts 2003, Cowen et al. 2007, Francis et al. 2007, Planes et al. 2009). One of the strongest drivers of genetic structure is connectivity, i.e. the demographic linking of lo-

cal populations via the dispersal of larvae, juveniles or adults (Sale et al. 2005), which influences almost all ecological and evolutionary processes in metapopulations (Hanski & Gaggiotti 2004). Genetic connectivity has been shown across a range of geographical scales among different marine taxa, ranging from virtually panmictic throughout considerably large geographic ranges (Bowen et al. 2001, Lessios et al. 2003, Klanten et al. 2007, Beldade et al. 2009, Leray

et al. 2010) to clearly structured populations at very small scales (Sotka et al. 2004, Bernardi 2005, Barber et al. 2006, Gerlach et al. 2007, Beldade et al. 2012).

Many fish form spawning aggregations (i.e. groups of conspecific fish that gather for the purpose of spawning, with densities or numbers significantly higher than those found in the area of aggregation during non-reproductive periods; Domeier & Colin 1997), including groupers, snappers, jacks, surgeonfishes, damselfishes and parrotfishes (Sala et al. 2003, Erisman et al. 2007, Gladstone 2007, Sadovy de Mitcheson et al. 2008, Gerhardinger et al. 2009). Some groupers return to the same spawning sites in consecutive spawning seasons (Sala et al. 2001, Starr et al. 2007), in some cases covering large distances to do so (Bolden 2000). If adult spawning aggregation site fidelity is indeed ubiquitous among large groupers, then the dispersal of the pelagic larval stages that are subjected to transport by ocean currents should be the main driver of genetic connectivity. Two elements underline the importance of oceanographic characteristics to the dispersal of spawning aggregation offspring. First, the specific location of spawning aggregations appears to maximize the rapid advection of eggs and larvae away from the reef environment (e.g. Choat 2012, Colin 2012a). Second, knowledge of the onset of sensorial and swimming abilities of pelagic larvae, which in the case of groupers is still largely unknown, is essential to understand how larval abilities might steer the dispersal process (e.g. Colin 2012b, Hamner & Largier 2012). Larval abundance and even the magnitude of recruitment events appear to be correlated with oceanographic and climatic parameters, such as temperature, salinity and depth (but see e.g. Aburto-Oropeza et al. 2010, Marancik et al. 2012).

The northern Gulf of California (NGC) is home to several fishes that aggregate to spawn and is part of one of the most productive marine ecosystems in the world, contributing most of Mexico's fishery resources (Arvizu-Martínez 1987, Lluch-Cota et al. 2007, Erisman et al. 2012). The NGC covers a relatively small area extending from the Colorado delta in the north to Bahia de Los Angeles and Isla Tiburón in the south (Fig. 1). In this region, in-depth knowledge of water circulation patterns and other geomorphological characteristics (Fig. 1) provide a unique opportunity to describe genetic structure and test models of gene flow in locally occurring species. In the NGC, the main oceanographic features comprise intense tidal mixing (Argote et al. 1995) and a seasonally reversing gyre, anticyclonic in summer (June to September) (Fig. 1B) and cyclonic in winter (Fig. 1C) (Lavín et al. 1997, Marinone et al. 2008); strong coastal currents along the eastern Sonora coastline (Peguero-Icaza et al. 2011); and small residual currents and small eddies in the upper gulf (Marinone et al. 2011). These characteristics are likely to influence the transport of larvae in the NGC (Marinone et al. 2004, Cudney-Bueno et al. 2009). Both local water circulation and bottom geomorphologic characteristics may have important implications for the formation of spawning aggregations as well as for the fate of eggs or larvae released there (Cherubin et al. 2011, Karnauskas et al. 2011). In the NGC, there are 2 deep basins, the Delfin Basin (800 m) and the Wagner Basin (200 m), and several sills (Lavín et al. 1997) whose putative part in limiting dispersal of larvae or concentrating prey for early larval stages remains unclear (e.g. Karnauskas et al. 2011).

The gulf coney *Hyporthodus acanthistius* (formerly *Epinephelus acanthistius*; Craig & Hastings 2007) is a

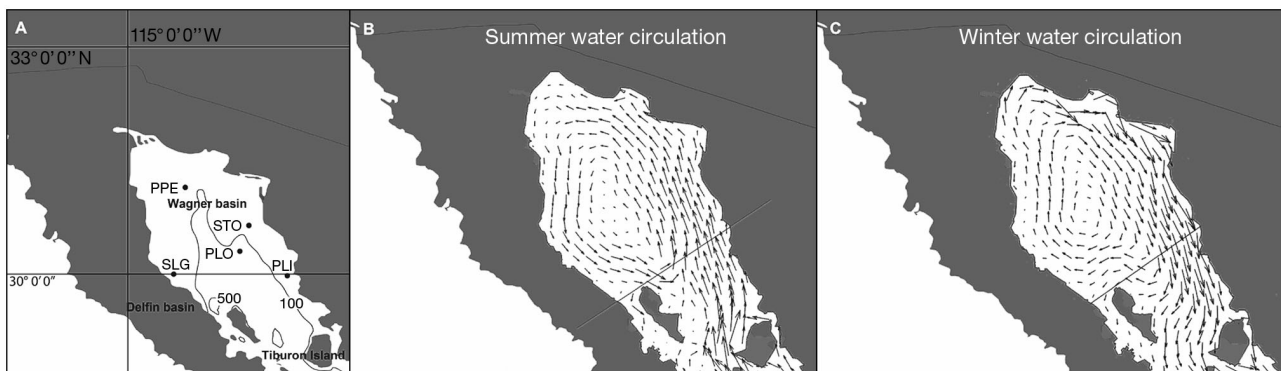


Fig. 1. Northern Gulf of California (NGC) including (A) bathymetry (depth in meters) and named sampled spawning aggregations of the gulf coney *Hyporthodus acanthistius* (PLI, Puerto Libertad; PLO, Puerto Lobos; STO, Santo Tomas; PPE, Puerto Peñasco; and SLG, San Luiz Gonzaga); (B) ocean circulation in the summer (only the month of July is represented); and (C) in the winter (only the month of January is represented). Ocean circulation reproduced from Marinone (2003) by permission of the American Geophysical Union

tropical and subtropical large grouper that occurs from southern California to Peru (Heemstra & Randall 1993), including the Gulf of California (or Sea of Cortez) (Cudney-Bueno & Turk-Boyer 1998, Aburto-Oropeza et al. 2008). It is found at depths greater than ~45 m usually in silty areas adjacent to rocky reefs (Thomson et al. 2000), and spawns in aggregations on muddy bottoms during the spring and summer months (Cudney-Bueno & Turk-Boyer 1998). During the spawning period, artisanal fishermen heavily target this species (Aburto-Oropeza et al. 2008). Indeed, the high commercial value and temporal and spatial predictability of their mass gatherings make groupers a prime target for fisheries. Despite its present 'Least Concern' conservation status (IUCN 2012), the abundance of the gulf coney in the NGC has been rapidly declining over the past 2 decades (Aburto-Oropeza et al. 2008). Elsewhere, there are many examples of collapsed grouper spawning aggregations because of overfishing such as the Nassau grouper *E. striatus* (e.g. Sala et al. 2001, Aguilar-Perera 2006) and the gulf grouper *Mycteroperca jordani* (Sáenz-Arroyo et al. 2005). Given the threat of overfishing to fish that form spawning aggregations (Sadovy de Mitcheson et al. 2013), it is imperative to provide connectivity data to devise informed management plans.

In this study, we integrate molecular evidence from highly variable molecular markers (control region and 11 microsatellites) to assess genetic structure and connectivity among spawning aggregations of the gulf coney in the NGC. Oceanographic and geomorphological regional characteristics are used to delineate particular models of gene flow across the spawning aggregation network. This study provides essential information for the management and recovery of this threatened fishery in the NGC.

MATERIALS AND METHODS

Sampling and DNA extraction

Fin clips of *Hyporthodus acanthistius* were collected in 2003 aboard fishing boats that operated at 5 spawning locations in the NGC: Puerto Libertad, Puerto Lobos, Santo Tomás, Puerto Peñasco, and San Luiz Gonzaga (Fig. 1). Immediately after collection, fin clips were placed in 95 % ethanol and stored at ambient temperature in the field and then at 4°C in the lab. Total genomic DNA was extracted from 20 mg of fin tissue by Proteinase K digestion in lysis buffer (10 mM Tris, 400 mM NaCl, 2 mM EDTA, 1 % sodium dodecyl

sulfate) overnight at 55°C. This was followed by purification using phenol/chloroform extractions and alcohol precipitation (Sambrook et al. 1989).

mtDNA and microsatellites

We amplified the 5' end of the hyper-variable portion of the mitochondrial control region using the universal primers CR-A and CR-E (Lee et al. 1995). Each 100 µl reaction contained 10 to 100 ng of DNA, 10 mM Tris HCl (pH 8.3), 50 mM KCl, 1.5 mM MgCl₂, 2.5 units of *Taq* DNA polymerase (Perkin-Elmer), 150 mM of each dNTP, and 0.3 mM of each primer and was amplified with a cycling profile of 45 s at 94°C, 1 min at 52°C and 1 min at 72°C for 35 cycles. After purification of amplified DNA genes following the manufacturer's protocol (ABI, Perkin-Elmer), we sequenced on an ABI 3100 automated sequencer (Applied Biosystems).

All individuals were genotyped for 13 microsatellites following protocols described in Molecular Ecology Resources Primer Development Consortium et al. (2009). Each individual was genotyped using GENEMAPPER 3.7 (Applied Biosystems). To estimate potential genotyping errors, we re-amplified and re-scored 21 randomly picked samples and evaluated concordance between the first and second score. Overall, the genotyping error rate was less than 2 %, which is reasonable for population differentiation studies based on allele frequencies (Bonin et al. 2004), and less than 2 % of data were missing for any given locus. Data were scanned for null alleles and stuttering using MICROCHECKER 2.2.3 (van Oosterhout et al. 2004) and for deviations from Hardy-Weinberg equilibrium (HWE) and linkage disequilibrium after 10 000 permutations using ARLEQUIN 3.5 (Excoffier & Lischer 2010). Two microsatellites, EAC_A08 and EAC_B08, were dropped from the analysis because of the putative presence of null alleles.

Genetic diversity and genetic structure among spawning aggregations

Genetic diversity measures for each population including number of haplotypes, haplotype diversity and nucleotide diversity were calculated with DNAsp 5 (Librado & Rozas 2009). To assess population structure, we used 2 separate approaches. In the first, more classical approach, fixation indices (F_{ST}) relying on allele frequencies were calculated using ARLEQUIN 3.5 (Excoffier & Lischer 2010). We calcu-

lated 95% confidence intervals around the F_{ST} estimates using GDA 1.1 (Lewis & Zaykin 2001), rather than just p-values, as these may not be good indicators of differentiation between populations and are dependent on sample size and variability (Jost 2008). In the second approach, we used a Bayesian model-based clustering method using microsatellite data implemented in STRUCTURE 2.3.2 (Falush et al. 2007). STRUCTURE assumes that there are k number of groups within which samples have compatible multi-locus genotypes. Convergence of parameters (α , F and likelihood) in preliminary runs was used to determine the burn-in (500 000) and length (1 000 000) of each run. For our analysis, we used an admixture model, which allows individuals to have mixed ancestry, and added sampling location as a weak prior (Falush et al. 2007). Then we performed 10 replicate runs for each cluster k varying between 1 and 6. To determine the correct number of clusters in the sample, we followed Evanno et al. (2005), who proposed the use of an ad hoc statistic Δk based on the rate of change in the log probability of data between successive k values. STRUCTURE HARVESTER was used to calculate Evanno's Δk and illustrate the differences in likelihood and Δk for each k (Earl & VonHoldt 2012). A Q plot was chosen to illustrate differences between populations, where each single vertical line (representing 1 individual) is partitioned into k -colored segments that represent that individual's estimated membership fraction in each of the k -inferred clusters (Pritchard et al. 2000).

Direction and magnitude of gene flow among spawning aggregations

To determine the pervasive migration pattern in the study area, we used MIGRATE-N 3.2.16 (Beerli & Palczewski 2010) to contrast 3 migration models. In all 3 models, spawning aggregates were nested according to the genetic structure suggested by the F_{ST} and structure analysis. Based on well-described local oceanographic circulation, we defined the direction of gene flow for each model as follows: (1) an unrestricted full migration model, (2) a model considering 2 population sizes and unidirectional northward gene flow and (3) a model considering 2 population sizes and unidirectional southward gene flow. Model 2 was delineated taking into account that *Hyporthodus acanthistius* spawns in the spring-summer, during which time anticyclonic circulation forces the water to flow northward on the eastern side of the NGC (see Fig. 1B) (Marinone 2012). Model

3 depicts the autumn-winter cyclonic water circulation pattern, which forces the water to flow southward (see Fig. 1C) (Marinone 2012).

MIGRATE-N provides the ratio of the marginal likelihoods (Bayes factors) of each model, which can subsequently be compared to select the most supported model (Beerli & Palczewski 2010). The best-supported model will have the highest log Bayes factors. This approach is particularly suited to our data because local hydrodynamics allow for a clear expectation of unidirectional gene flow in the study area and the nesting of aggregates reduces the number of parameters to be estimated from the data, thus increasing the power of the approach. A random subset of 30 samples from each of the 2 populations identified previously was used to compare the models. The mitochondrial locus was not used to test the models of gene flow because of its limited capability, as it is a single locus, for distinguishing the models.

A series of preliminary runs using Model 1, the unrestricted model, were used to determine convergence of posterior probabilities for each of the parameters. Running conditions chosen included 1 000 000 recorded steps, 10 long chains and 15 heated chains, a static heating scheme with the inverse of the temperature regularly spaced between 0 and 1 and a tree swapping interval of one; finally, the upper prior boundary for northward migration was set to vary between 0 and 10 000. The natural logarithm of Bayes factors with a Bezier approximation was calculated following Beerli & Palczewski (2010) as well as each model's probability by dividing each marginal likelihood by the sum of the marginal likelihoods of both models used. The best-supported model will be the one with the highest probability (Beerli & Palczewski 2010).

RESULTS

Genetic diversity

We obtained 232 sequences for a 361 bp fragment of the mitochondrial control region (Genbank KF425014 to KF425245). The sequences analyzed here had 133 polymorphic sites, 54 of which were informative. Genetic diversity was high for almost all spawning aggregations (Table 1). Genetic diversity was also calculated for the microsatellites from 246 individuals and included number of alleles, ratio of homozygotes to heterozygotes per locus, as well as HWE tests (Table S1 in the Supplement, available at www.int-res.com/articles/supp/m499p193_supp.pdf).

Table 1. Collection sites, number of mitochondrial control region sequences used (n) and molecular diversity indices (number of haplotypes, nh ; haplotype diversity, hd ; and nucleotide diversity, π) for *Hyporthodus acanthistius*

Sampling site	n	nh	hd	π
Puerto Libertad	53	18	0.839	0.0061
Puerto Lobos	62	27	0.911	0.0072
Santo Tomás	21	10	0.914	0.0068
Puerto Peñasco	55	17	0.902	0.0061
San Luiz Gonzaga	41	16	0.871	0.0065
Total	232	47	0.886	0.0066

Genetic structure of spawning aggregations

Low pairwise F_{ST} values were found across both genetic markers (Table 2). In spite of the significant differences found between pairs of F_{ST} estimates derived from microsatellites, 95% confidence intervals precluded any conclusion regarding the structure between Puerto Libertad and either Santo Tomás or Puerto Peñasco population pairs (Table 2).

Table 2. Population structure estimated by F_{ST} between *Hyporthodus acanthistius* populations calculated from the mitochondrial control region (below left) and from 11 microsatellites (above right) with 95% confidence intervals between brackets. Significant pairwise F_{ST} (at $p < 0.05$) after 10 000 permutations shown in bold. PLI, Puerto Libertad; PLO, Puerto Lobos; STO, Santo Tomás; PPE, Puerto Peñasco; SLG, San Luiz Gonzaga

	PLI	PLO	STO	PPE	SLG
PLI		0.003 [0.000 to 0.007]	0.003 [-0.005 to 0.009]	0.002 [0.000 to 0.018]	0.005 [0.002 to 0.020]
PLO	0.04254		0 [-0.001 to 0.009]	0.001 [-0.003 to 0.003]	0.003 [-0.001 to 0.005]
STO	0.03838	0.00049		-0.003 [-0.005 to 0.001]	-0.005 [-0.008 to -0.002]
PPE	0.07154	0.00045	0.0052		-0.001 [-0.003 to 0.002]
SLG	0.00561	0.01327	0.01133	0.02289	

Differentiation between the southernmost aggregation of Puerto Libertad and the remaining aggregations was identified through the Bayesian clustering method (Fig. 2). Evanno's Δk based on the mean and standard deviation of likelihoods, $L(k)$, for each k was highest for $k = 2$ (Fig. 3), confirming that $k = 2$ is the best representation of the genetic partitioning in the data. Assessment of convergence examples of skyline plots of $\log(\alpha)$ are given in the Supplement (Fig. S1).

Gene flow between spawning aggregations

Model 2 was the most supported migration model, as demonstrated by the highest value for the natural logarithm of the Bayes' factors (Table 3). Estimates of population size and number of migrants between the defined populations as well as parameter convergence are given in the Supplement (Table S2). Our analysis aligns well with the summer anticyclonic gyre used to delineate Model 2, which is consistent with both magnitude and direction of the gulf coney's

gene flow in the NGC. This period coincides with the pelagic phase of the *Hyporthodus acanthistius* larvae. The full migration model comes second to Model 2 because of the unrestricted migration between the populations to the north of Puerto Libertad. Finally, Model 3, in which gene flow follows the winter cyclonic water movement patterns described for the area, scored the lowest in explaining larval migration in the area.

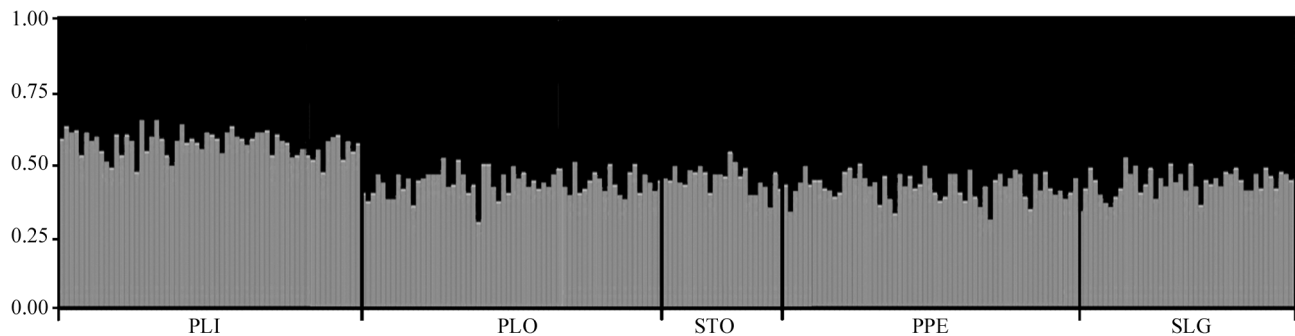


Fig. 2. Q-plot of the Bayesian population assignment test based on 11 microsatellite loci. Each vertical line represents a single *Hyporthodus acanthistius* individual; black/gray in each vertical line represent the likelihood of belonging to each of the clusters. Black vertical lines separate the spawning aggregations; population acronyms are defined in Fig. 1

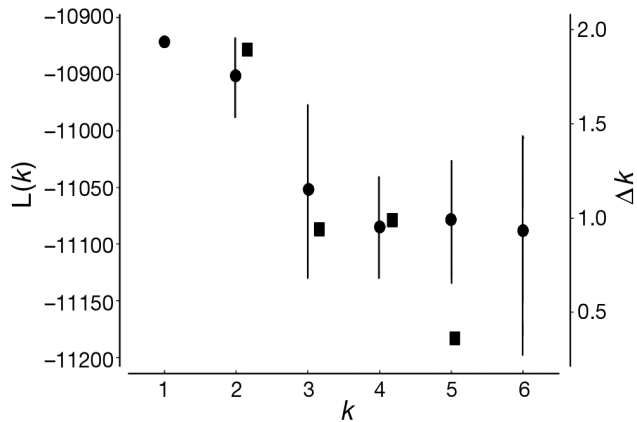





Fig. 3. Mean and standard deviation of log likelihoods, $L(k)$ (●); and Evanno's Δk (■) for each k value estimated in 10 independent runs in STRUCTURE. The highest Δk indicates the choice of $k = 2$ as the one that best describes the genetic partitioning in the data

Table 3. Natural log Bayes factors (lnL) and log marginal likelihoods (lML) for each gene flow model estimated by thermodynamic integration using 11 microsatellite markers. Model details are explained in 'Materials and methods'

Model No.	Bezier lnL	Harmonic lML	Choice (Bezier)	Model probability
1 	-4482.37	-4297.46	2	0.000
2 	-4353.63	-4134.17	1	1.000
3 	-5018.29	-4871.79	3	0.000

DISCUSSION

Genetic structure, hydrodynamics and site fidelity

In groupers, genetic differentiation of spawning aggregations has been observed but usually at large geographic scales (e.g. Rhodes et al. 2003, Rivera et al. 2004, Zatzoff et al. 2004). In this study, F_{ST} statistics based on mtDNA and microsatellites as well as Bayesian analysis were consistent in showing weak structure at a much smaller scale. In scenarios of weak genetic partitioning, F_{ST} metrics and Bayesian analysis have limited power in asserting structure (e.g. Waples & Gaggiotti 2006). In the present study, the inclusion of zero within the calculated F_{ST} 95% confidence intervals for 2 of the pairwise comparisons between Puerto Libertad and the other populations, and the

limited capacity for Evanno's Δk to distinguish between a panmictic population ($k = 1$) and the genetic structure suggested ($k = 2$) as well as similar posterior probabilities for the same k values, have to be acknowledged. Nonetheless, the concordance between markers and analysis in showing that within the NGC, the southernmost spawning aggregation sampled, Puerto Libertad, was slightly distinct from all others lends support to this conclusion. Hence, we present evidence for structure between spawning aggregations at a small geographic scale. Furthermore, while unimportant over evolutionary time scales, weak genetic structure can have important implications in ecology and conservation biology (Jones & Wang 2012).

Given that the NGC covers such a small geographic area, it was unexpected to observe even weak population structure among spawning aggregations that are so close geographically. The spawning aggregation at Puerto Libertad was only 40 km from the closest spawning aggregation at Puerto Lobos. Hydrodynamic features of the study area during the dispersive stage of the gulf coney's larvae are also consistent with our results, as the southernmost spawning aggregation is the only one that sits just outside of the summer anticyclonic gyre. This seasonal gyre may trap the larvae originating from all other spawning aggregations, preventing them from travelling south. Eddies may entrap fish eggs and larvae both in the open ocean (e.g. Holliday et al. 2011) and in enclosed seas (e.g. Contreras-Catala et al. 2012). Simultaneously, the northward currents described for the Puerto Libertad spawning aggregation site will transport larvae northward. The genetic differentiation of Puerto Libertad may also be reconciled with some level of site fidelity. While there are no published accounts of site fidelity or home range for *Hyporthodus acanthistiis*, several grouper species such as *Epinephelus tauvina* (Kaunda-Arara & Rose 2004) have some degree of site fidelity. Other examples have come from tagging studies of *E. striatus*, in which distances traveled to spawning sites ranged from 30 km (Sala et al. 2001) to upwards of 100 km (Carter et al. 1994, Bolden 2000). Movement at even the smallest of these scales could be very relevant within the NGC. The potential homogenizing effects of dispersing larvae are best explained by the study of gene flow.

Gulf coney's gene flow in the NGC

The most supported model for the genetic exchange among spawning aggregations of gulf coney

depicts the anticyclonic summer gyre, which coincides with the pelagic stage of this species' larvae. In the NGC, using a 3-dimensional baroclinic numerical model, Marinone et al. (2008) followed particles released in this gyre and found the same south-north direction of dispersal. Calderon-Aguillera et al. (2003) showed how hydrodynamics in the NGC influenced the dispersal of blue shrimp *Litopenaeus stylirostris* larvae and more recently Cudney-Bueno et al. (2009) reported similar circulation patterns and enhanced recruitment of rock scallop *Spondyllus calcifer* larvae and black murex *Hexaplex nigritus* larvae coming from the south of the NGC and settling into marine reserves located to the north. The currents along the eastern shore of the NGC may reach speeds of up to 0.06 m s^{-1} during the summer (Cudney-Bueno et al. 2009), which, considering a planktonic larval duration of approximately 30 d for the gulf coney in the NGC (K. Rowell, Biology Department, University of Washington, pers. comm.), would easily allow them to disperse between adjoining spawning aggregates and even beyond. Within 4 wk, larvae may travel the 148 km distance that separates Puerto Libertad and Puerto Peñasco, the southernmost and northernmost spawning aggregations.

Management of spawning aggregations

Our study highlights the importance of detailing the genetic structure and gene flow between spawning aggregations even at small geographic scales where panmixia is expected. The weak genetic structure found here can have important implications in ecology and conservation biology of this species. Management programs for the gulf coney in the NGC should reinforce protection of the southernmost spawning aggregation near Puerto Libertad. Both shallow genetic structure and an anticyclonic direction of gene flow suggest that Puerto Libertad is a source population, primarily exporting larvae north into the NGC. Oceanographic data suggest that Puerto Libertad may also play an important role as a gateway for larvae and gene flow originating from the middle gulf (e.g. Danell-Jiménez et al. 2009). If this pattern proves to be true, overfishing in the middle gulf region may have dire consequences for the populations in the NGC.

Acknowledgements. We thank the Intercultural Center for the Study of Deserts and Oceans (CEDO), especially R. Loiaza, I. Martinez and A. Sanchez; as well as Community and Biodiversity, AC (COBI) especially N. Encinas, C.

Moreno and M. Rojo. We also thank 2 anonymous reviewers who provided helpful comments on an earlier version of the manuscript. Funding for this study was provided by the David and Lucile Packard Foundation, grant award #2008-32210. R.B. was also funded by the Fundação para a Ciência e a Tecnologia (SFRH/BPD/26901/2006). Collecting permits for this study were issued by SAGARPA under the National Commission for Aquaculture and Fisheries, permit #2885. This is a scientific contribution to the PANGAS project (www.pangas.arizona.edu).

LITERATURE CITED

- Aburto-Oropeza O, Erisman B, Valdez-Ornelas V, Danemann G (2008) Commercially important serranid fishes from the Gulf of California: ecology, fisheries and conservation. *Pronatura, Ciencia y Conservación*:1–44
- Aburto-Oropeza O, Paredes G, Mascareñas-Osorio I, Sala E (2010) Climatic influence on reef fish recruitment and fisheries. *Mar Ecol Prog Ser* 410:283–287
- Aguilar-Perera A (2006) Disappearance of a Nassau grouper spawning aggregation off the southern Mexican Caribbean coast. *Mar Ecol Prog Ser* 327:289–296
- Argote ML, Amador A, Lavín MF, Hunter JR (1995) Tidal dissipation and stratification in the Gulf of California. *J Geophys Res* 100:16103–16118
- Arvizu-Martínez J (1987) Fisheries activities in the Gulf of California. *CalCOFI Report*, XXVIII
- Barber PH, Erdmann MV, Palumbi SR (2006) Comparative phylogeography of three codistributed stomatopods: origins and timing of regional lineage diversification in the coral triangle. *Evolution* 60:1825–1839
- Beerli P, Palczewski M (2010) Unified framework to evaluate panmixia and migration direction among multiple sampling locations. *Genetics* 185:313–326
- Beldade R, Heiser JB, Robertson R, Gasparini JL, Floeter SR, Bernardi G (2009) Historical biogeography and speciation in the Creole wrasses (Labridae, Clepticus). *Mar Biol* 156:679–687
- Beldade R, Holbrook SJ, Schmitt RJ, Planes S, Malone D, Bernardi G (2012) Larger female fish contribute disproportionately more to self-replenishment. *Proc R Soc Lond B Biol Sci* 279:2116–2121
- Bernardi G (2005) Phylogeography and demography of sympatric sister surfperch species, *Embiotoca jacksoni* and *E. lateralis* along the California coast: historical and ecological factors. *Evolution* 59:386–394
- Bolden S (2000) Long-distance movement of a Nassau grouper (*Epinephelus striatus*) to a spawning aggregation in the central Bahamas. *Fish Bull* 98:642–645
- Bonin A, Bellemain E, Bronken Eidesen P, Pompanon F, Brochmann C, Taberlet P (2004) How to track and assess genotyping errors in population genetics studies. *Mol Ecol* 13:3261–3273
- Bowen W, Bass AL, Rocha LA, Grant WS, Robertson DR (2001) Phylogeography of the trumpetfishes (*Aulostomus*): ring species complex on a global scale. *Evolution* 55:1029–1039
- Calderon-Aguillera L, Marinone SG, Arago EA (2003) Influence of oceanographic processes on the early life stages of the blue shrimp (*Litopenaeus stylirostris*) in the upper Gulf of California. *J Mar Sci* 39:117–128
- Carter J, Marrow G, Pryor V (1994) Aspects of the ecology and reproduction of Nassau grouper, *Epinephelus striatus*

- tus*, off the coast of Belize, Central America. *Annu Proc Gulf Caribb Fish Inst* 43:65–111
- Cherubin LM, Nemeth RS, Idrisi N (2011) Flow and transport characteristics at an *Epinephelus guttatus* (red hind grouper) spawning aggregation site in St. Thomas (US Virgin Islands). *Ecol Model* 222:3132–3148
- Choat JH (2012) Spawning aggregations in reef fishes; ecological and evolutionary processes. In: Sadovy de Mitcheson Y, Colin PL (eds) Reef fish spawning aggregations: biology, research and management. Springer Netherlands, Dordrecht, p 85–116
- Colin PL (2012a) Timing and location of aggregation and spawning in reef fishes. In: Sadovy de Mitcheson Y, Colin PL (eds) Reef fish spawning aggregations: biology, research and management. Springer Netherlands, Dordrecht, p 117–158
- Colin PL (2012b) Aggregation spawning: biological aspects of the early life history. In: Sadovy de Mitcheson Y, Colin PL (eds) Reef fish spawning aggregations: biology, research and management. Springer Netherlands, Dordrecht, p 191–224
- Contreras-Catala F, Sanchez-Velasco L, Lavín MF, Godínez VM (2012) Three-dimensional distribution of larval fish assemblages in an anticyclonic eddy in a semi-enclosed sea (Gulf of California). *J Plankton Res* 34:548–562
- Cowen RK, Gawarkiewicz G, Pineda J, Thorrold SR, Werner FE (2007) Population connectivity in marine systems. *Oceanography* 20:14–21
- Craig MT, Hastings PA (2007) A molecular phylogeny of the groupers of the subfamily Epinephelinae (Serranidae) with a revised classification of the Epinephelini. *Ichthyol Res* 54:1–17
- Cudney-Bueno R, Turk-Boyer PJ (1998) Pescando entre mareas del Alto Golfo de California: una guía sobre la pesca artesanal, su gente y sus propuestas de manejo. Centro Intercultural des Estudios de Desiertos y Océanos, Puerto Penasco, Sonora
- Cudney-Bueno R, Lavín MF, Marinone SG, Raimondi PT, Shaw WW (2009) Rapid effects of marine reserves via larval dispersal. *PLoS ONE* 4:e4140
- Danell-Jiménez A, Sánchez-Velasco L, Lavín MF, Marinone SG (2009) Three-dimensional distribution of larval fish assemblages across a surface thermal / chlorophyll front in a semienclosed sea. *Estuar Coast Shelf Sci* 85: 487–496
- Domeier ML, Colin PL (1997) Tropical reef fish spawning aggregations: defined and reviewed. *Bull Mar Sci* 60: 698–726
- Earl DA, VonHoldt BM (2012) STRUCTURE HARVESTER: a website and program for visualizing STRUCTURE output and implementing the Evanno method. *Conserv Genet Resour* 4:359–361
- Erisman BE, Buckhorn ML, Hastings PA (2007) Spawning patterns in the Leopard grouper, *Mycteroperca rosacea*, in comparison with other aggregating groupers. *Mar Biol* 151:1849–1861
- Erisman B, Aburto-Oropeza O, Gonzalez-Abraham C, Mascareñas-Osorio I, Moreno-Báez M, Hastings PA (2012) Spatio-temporal dynamics of a fish spawning aggregation and its fishery in the Gulf of California. *Sci Rep* 2:284
- Evanno G, Regnaut S, Goudet J (2005) Detecting the number of clusters of individuals using the software STRUCTURE: a simulation study. *Mol Ecol* 14:2611–2620
- Excoffier L, Lischer HEL (2010) Arlequin suite ver 3.5: a new series of programs to perform population genetics analyses under Linux and Windows. *Mol Ecol Resour* 10: 564–567
- Falush D, Stephens M, Pritchard JK (2007) Inference of population structure using multilocus genotype data: dominant markers and null alleles. *Mol Ecol Notes* 7:574–578
- Francis RC, Hixon MA, Clarke ME, Murawski SA, Ralston S (2007) Ten commandments for ecosystem-based fisheries scientists. *Fisheries* 32:217–233
- Gell FR, Roberts CM (2003) Benefits beyond boundaries: the fishery effects of marine reserves. *Trends Ecol Evol* 18: 448–455
- Gerhardinger LC, Hostim-Silva M, Medeiros RP, Matarezi J, Bertoini AA, Freitas MO, Ferreira BP (2009) Fishers' resource mapping and goliath grouper *Epinephelus itajara* (Serranidae) conservation in Brazil. *Neotrop Ichthyol* 7:93–102
- Gerlach G, Atema J, Kingsford MJ, Black KP, Miller-Sims V (2007) Smelling home can prevent dispersal of reef fish larvae. *Proc Natl Acad Sci USA* 104:858–863
- Gladstone W (2007) Selection of a spawning aggregation site by *Chromis hypsilepis* (Pisces: Pomacentridae): habitat structure, transport potential, and food availability. *Mar Ecol Prog Ser* 351:235–247
- Hamner WM, Largier JL (2012) Oceanography of the planktonic stages of aggregation spawning reef fishes. In: Sadovy de Mitcheson Y, Colin PL (eds) Reef fish spawning aggregations: biology, research and management. Springer Netherlands, Dordrecht, p 159–190
- Hanski I, Gaggiotti O (2004) Metapopulation biology: past, present and future. In: Hanski I, Gaggiotti O (eds) Ecology, genetics and evolution of metapopulations. Elsevier Academic Press, London, p 3–22
- Heemstra PC, Randall JE (1993) FAO species catalogue, Vol 16: Groupers of the world (family Serranidae, subfamily Epinephelinae). *FAO Fish Synop* 125:102–103
- Holliday D, Beckley LE, Olivar MP (2011) Incorporation of larval fishes into a developing anti-cyclonic eddy of the Leeuwin Current off south-western Australia. *J Plankton Res* 33:1696–1708
- Jones OR, Wang J (2012) A comparison of four methods for detecting weak genetic structure from marker data. *Ecol Evol* 2:1048–55
- Jost L (2008) G_{ST} and its relatives do not measure differentiation. *Mol Ecol* 17:4015–4026
- Karnauskas M, Chérubin LM, Paris CB (2011) Adaptive significance of the formation of multi-species fish spawning aggregations near submerged capes. *PLoS ONE* 6: e22067
- Kaunda-Arara B, Rose GA (2004) Homing and site fidelity in the greasy grouper *Epinephelus tauvina* (Serranidae) within a marine protected area in coastal Kenya. *Mar Ecol Prog Ser* 277:245–251
- Klanten OS, Choat JH, Herwerden L (2007) Extreme genetic diversity and temporal rather than spatial partitioning in a widely distributed coral reef fish. *Mar Biol* 150:659–670
- Lavín MF, Durazo R, Palacios E, Argote ML, Carrillo L (1997) Lagrangian observations of the circulation in the northern Gulf of California. *J Phys Oceanogr* 27:2298–2305
- Lee WJ, Conroy J, Howell WH, Kocher T (1995) Structure and evolution of teleost mitochondrial control regions. *J Mol Evol* 41:54–66
- Leray M, Beldade R, Holbrook SJ, Schmitt RJ, Planes S, Bernardi G (2010) Allopatric divergence and speciation in coral reef fish: the three-spot dascyllus, *Dascyllus trimaculatus*, species complex. *Evolution* 64:1218–1230

- Lessios HA, Kane J, Robertson DR (2003) Phylogeography of the pantropical sea urchin *Tripneustes*: contrasting patterns of population structure between oceans. *Evolution* 57:2026–2036
- Lewis PO, Zaykin D (2001) Genetic data analysis: computer program for the analysis of allelic data. Version 1.1. Available at <http://lewis.eeb.uconn.edu/lewishome/software.html>
- Librado P, Rozas J (2009) DnaSP v5: a software for comprehensive analysis of DNA polymorphism data. *Bioinformatics* 25:1451–1452
- Lluch-Cota SE, Aragón-Noriega EA, Arreguín-Sánchez F, Aurióles-Gamboa D and others (2007) The Gulf of California: review of ecosystem status and sustainability challenges. *Prog Oceanogr* 73:1–26
- Marancik K, Richardson D, Lyczkowski-Shultz J, Cowen R, Konieczna M (2012) Spatial and temporal distribution of grouper larvae (Serranidae: Epinephelinae: Epinephelini) in the Gulf of Mexico and Straits of Florida. *Fish Bull* 110:1–20
- Marinone SG (2003) A three-dimensional model of the mean and seasonal circulation of the Gulf of California. *J Geophys Res* 108:3325, doi:10.1029/2002JC001720
- Marinone SG (2012) Seasonal surface connectivity in the Gulf of California. *Estuar Coast Shelf Sci* 100:133–141
- Marinone SG, Gutierrez OQ, Parés-Sierra A (2004) Numerical simulation of California, larval shrimp dispersion in the northern region of the Gulf of California. *Estuar Coast Shelf Sci* 60:611–617
- Marinone SG, Ulloa MJ, Parés-Sierra A, Lavin M, Cudney-bueno R (2008) Connectivity in the northern Gulf of California from particle tracking in a three-dimensional numerical model. *J Mar Syst* 71:149–158
- Marinone SG, Lavin M, Parés-Sierra A (2011) A quantitative characterization of the seasonal Lagrangian circulation of the Gulf of California from a three-dimensional numerical model. *Cont Shelf Res* 31:1420–1426
- Molecular Ecology Resources Primer Development Consortium, Abercrombie LG, Anderson CM, Baldwin BG and others (2009) Permanent genetic resources added to molecular ecology resources database 1 January 2009–30 April 2009. *Mol Ecol Resour* 9:1375–1379
- Mora C, Sale PF (2002) Are populations of coral reef fish open or closed? *Trends Ecol Evol* 17:422–428
- Peguero-Icaza M, Sanchez-Velasco L, Lavín MF, Marinone SG, Beier E (2011) Seasonal changes in connectivity routes among larval fish assemblages in a semi-enclosed sea (Gulf of California). *J Plankton Res* 33:517–533
- Planes S, Jones GP, Thorrold SR (2009) Larval dispersal connects fish populations in a network of marine protected areas. *Proc Natl Acad Sci USA* 106:5693–5697
- Pritchard JK, Stephens M, Donnelly P (2000) Inference of population structure using multilocus genotype data. *Genetics* 155:945–959
- Rhodes KL, Lewis RW, Chapman RI, Sadovy Y (2003) Genetic structure of camouflage grouper, *Epinephelus polyphekadion* (Pisces: Serranidae), in the western central Pacific. *Mar Biol* 142:771–776
- Rivera MAJ, Kelley CD, Roderick GK (2004) Subtle population genetic structure in the Hawaiian grouper, *Epinephelus quernus* (Serranidae), as revealed by mitochondrial DNA analyses. *Biol J Linn Soc* 81:449–468
- Sadovy de Mitcheson Y, Cornish A, Domeier M, Colin PL, Russell M, Lindeman KC (2008) A global baseline for spawning aggregations of reef fishes. *Conserv Biol* 22:1233–1244
- Sadovy de Mitcheson Y, Craig MT, Bertoncini AA, Carpenter KE and others (2013) Fishing groupers towards extinction: a global assessment of threats and extinction risks in a billion dollar fishery. *Fish Fish* 14:119–136
- Sáenz-Arroyo A, Roberts CM, Torre J, Cariño-Olvera M, Enríquez-Andrade RR (2005) Rapidly shifting environmental baselines among fishers of the Gulf of California. *Proc R Soc Lond B Biol Sci* 272:1957–1962
- Sala E, Ballesteros E, Starr RM (2001) Rapid decline of Nassau grouper spawning aggregations in Belize: fishery management and conservation needs. *Fisheries* 26:23–30
- Sala E, Aburto-Oropeza O, Paredes G, Thompson G (2003) Spawning aggregations and reproductive behavior of reef fishes in the Gulf of California. *Bull Mar Sci* 72:103–121
- Sale PF, Cowen RK, Danilowicz BS, Jones GP and others (2005) Critical science gaps impede use of no-take fishery reserves. *Trends Ecol Evol* 20:74–80
- Sambrook J, Fritsch E, Maniatis T (1989) *Molecular cloning: a laboratory manual*, 2nd edn. Cold Spring Harbor Laboratory, Cold Spring Harbor, NY
- Sotka EE, Wares JP, Barth JA, Grosberg RK, Palumbi SR (2004) Strong genetic clines and geographical variation in gene flow in the rocky intertidal barnacle *Balanus glandula*. *Mol Ecol* 13:2143–2156
- Starr RM, Sala E, Ballesteros E, Zabala M (2007) Spatial dynamics of the Nassau grouper *Epinephelus striatus* in a Caribbean atoll. *Mar Ecol Prog Ser* 343:239–249
- Thomson D, Findley L, Kerstitch A (2000) *Reef fishes of the Sea of Cortez, the rocky shore fishes of the Gulf of California*. University of Texas Press, Austin, TX
- van Oosterhout C, Hutchinson WF, Wills DPM, Shipley P (2004) MICRO-CHECKER: software for identifying and correcting genotyping errors in microsatellite data. *Mol Ecol Notes* 4:535–538
- Waples RS, Gaggiotti O (2006) What is a population? An empirical evaluation of some genetic methods for identifying the number of gene pools and their degree of connectivity. *Mol Ecol* 15:1419–1439
- Zatcoff MS, Ball O, Sedberry GR (2004) Population genetic analysis of red grouper, *Epinephelus morio*, and scamp, *Mycteroperca phenax*, from the southeastern U.S. Atlantic and Gulf of Mexico. *Mar Biol* 144:769–777